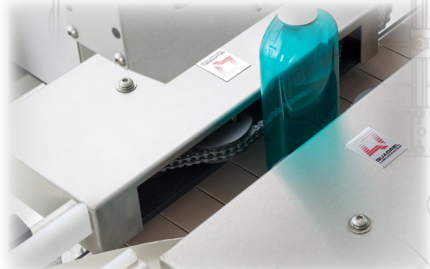


ECONOLINE® Economically Priced Front/ Back Labeling System

The EconoLine labeling system is a rugged, reliable, economically priced pressure sensitive labeling system for front/back, side panel and wrap applications. It is ideal for budget-conscious companies with production rates of 100 ppm or less and may be hand loaded or integrated into a automatic production line. System features newly reconfigured E100 labeling head with M3 Microprocessor control.

EconoLine sets a new price threshold for automatic labeling. Advanced features such as heavy duty stainless steel construction and 'no tool/ no change parts' operation are all standard in the EconoLine.



- Compact footprint
- Suitable for harsh/ multi-shift environments
- Programmable microprocessor controls with flash memory
- 50 programmable product presets
- No change parts product handling
- Stainless steel construction

www.quadrel.com
440.602.4700

QUALITY / FLEXIBILITY

This high quality modular labeling system is capable of production rates of up to 100 products per minute.

The versatility of EconoLine makes it ideal for packaging lines requiring frequent changeovers on a wide variety of products.

ADVANCED CONTROLS

EconoLine features a programmable microprocessor control with flash memory. This provides electronic synchronization of the labeling process and stores up to 50 label/ product presets.

STANDARD FEATURES

SYSTEM

- Microprocessor control with flash memory
- Encoder based speed compensation
- 4-1/2" width x 120" length x 34" height conveyor
- Stainless steel welded frame
- Production Rate: Up to 120 products per minute (dependent upon label/product dimensions)
- Applied accuracy: Up to $\pm 1/32"$ @ Sigma 2 (exclusive of product variation)
- Maximum product height: 14"
- Pacing wheel
- Chain Aligners

LABEL APPLICATOR

- Stepping motor label drive
- Rugged stainless steel /aluminum construction
- Precision sealed bearings
- Outboard supported drive for long-term reliability
- Dependable performance in harsh environments
- 12" label unwind
- 6 1/4" web width (6 1/8" max. label width)
- 220 / 50/ 60H/ 1 Phase

OPTIONS

- Missing label on product detection
- Product pacing and alignment feedscrews
- Low label detection
- End-of-web detection
- Broken web detection
- Loose- Loop Thermal Transfer, Laser or Inkjet printer
- Hot stamp imprinter
- Clear label detection
- Consult factory for additional options

